

CD161 Recombinant Protein

Catalog: NCP0285

Host: E.coli

Tag: His-tag

BackGround:

CD161/KLRB1 (Killer cell lectin-like receptor subfamily B member 1, also known as CLEC5B and NKR-P1A) is a type II transmembrane protein that is expressed on the majority of Natural Killer (NK) cells, NK T cells, and some T lymphocytes. CD161/KLRB1 is also expressed on Th17 cells, promotes their generation, and modulates their function. Engagement with its ligand lectin-like transcript 1 (LLT1) inhibits NK cell function, while LLT1 and CD161/KLRB1 interaction in the presence of a TCR signal enhances IFN-gamma production by T cells. There are several different CD161 isoforms in rodents and some function as activating receptors as well.

Product:

PBS, 4M Urea, PH7.4

Molecular Weight:

~22kDa

Swiss-Prot:

Q12918

Purification&Purity:

Transferred into competent cells and the supernatant was purified by NI column affinity chromatography and the

purity is > 85% (by SDS-PAGE).

Restriction Sites:

NdeI-XhoI

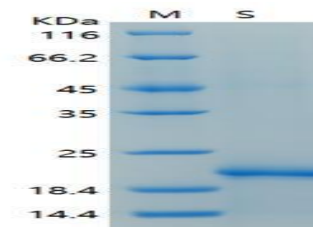
Storage&Stability:

Store at 4 °C short term. Aliquot and store at -20 °C long term. Avoid freeze-thaw cycles.

Expression Vector:

pet-22b(+)

DATA:



SDS-PAGE Result

Note:

For research use only, not for use in diagnostic procedure.

Bioworld Technology, Inc.

Add: 1660 South Highway 100, Suite 500 St. Louis Park,
MN 55416, USA.

Email: info@bioworld.com

Tel: 6123263284

Fax: 6122933841

Bioworld technology, co. Ltd.

Add: No 9, weidi road Qixia District Nanjing, 210046,
P. R. China.

Email: info@biogot.com

Tel: 0086-025-68037686

Fax: 0086-025-68035151